

AQATEK 1000

HYDRO ELECTRIC
GENERATION FOR
CONSTANT POWER.

TURBINE

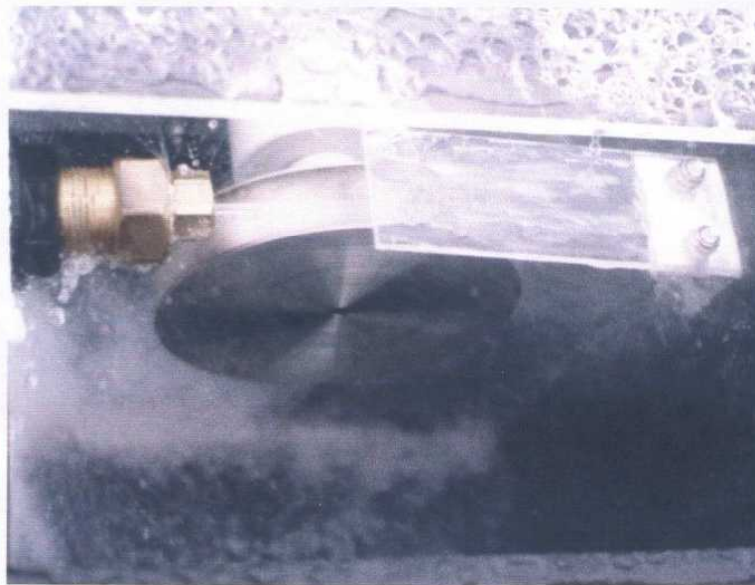
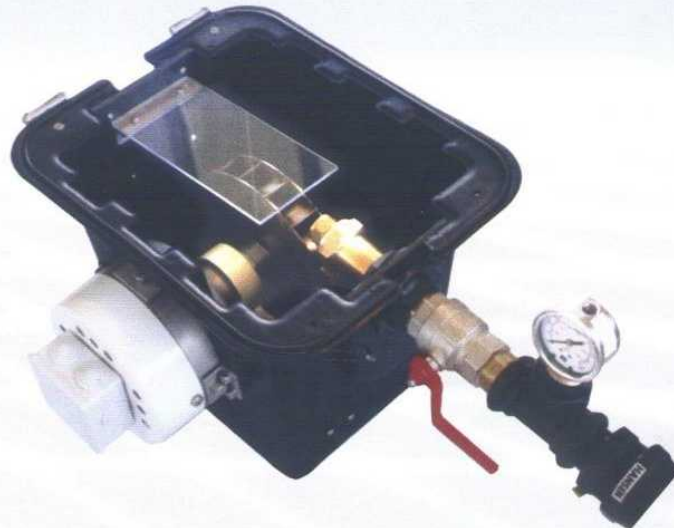
STAINLESS STEEL
CROSS FLOW FOR
HIGH AND LOW
PRESSURE SITES.
EASY NOZZEL
CHANGE TO SUIT
FLOW CONDITIONS.

ALTERNATOR

DIRECT DRIVE.
RARE EARTH PERMANENT
MAGNET.
WATER COOLED STAINLESS
STEEL BODY,
STATOR AND WINDING
ADJUSTED TO SITE.
HIGH POWER,
HIGH STRENGTH,
25mm SEALED BEARINGS.
25mm STAINLESS SHAFT.

HOUSING

INJECTION MOULDED
POLYPROPELENE.



HYDROELECTRIC POWER GENERATION IS THE IDEAL FORM OF ELECTRICAL POWER SUPPLY PROVIDING CONTINUOUS BULK AND FLOAT CHARGING OF STORAGE BATTERIES.

THE **AQATEK 1000** IS DESIGNED FOR MAINTENANCE FREE OPERATION. ONE MOVING PART ON LARGE SEALED BEARINGS, DIRECT DRIVE HIGH EFFICIENCY BRUSHLESS ALTERNATOR. STAINLESS STEEL COMPONENTS QUIET OPERATION, SIMPLE INSTALLATION.

**DESIGNED AND MANUFACTURED IN NEW ZEALAND
3 YEAR WARRANTY.**

